



**WHY INTUS?**

## THE COMPANY

### **Built To Be The Most Energy Efficient**

INTUS creates high performing windows and doors that conserve energy, increase thermal performance, and reduce noise. By balancing superb energy efficiency, affordability, and versatility, INTUS is making sustainable building attainable for any type of commercial project in the U.S.

The source of nearly 48% of the world's greenhouse gas emissions is from buildings; windows and doors are key to dramatically increasing the energy efficiency of buildings and decreasing wasted energy. INTUS is committed to providing innovative solutions whether for a modern multi-family building beside the NYC subway, a luxury hotel in Tennessee, or a school in Maine. Through our customizable solutions it is now possible to balance costs, long-term performance, and secure savings on the ever-rising cost of energy.

INTUS Windows aims to drastically decrease the carbon footprint and ensure a greener future. For this reason, the company also plants a tree for every window and door sold through One Window, One Tree program. Numerous company products are also PHI (Passive House Institute) certified and PHIUS (Passive House Institute US) verified. Passive House is a house that follows stringent environmental and energy efficiency requirements and consumes minimal energy. INTUS Windows is among the best known passive house suitable windows and doors producers in the U.S. The company is active in the community and promotion of the passive house movement. In addition, INTUS Windows takes part in USGBC (U.S. Green Building Council) and AIA (The American Institute of Architects) associations activities, participates in yearly NAPHN (North American Passive House Network) and NAPHC (North American Passive House Conference) conferences, meetings, and hold sessions in these events. Finally, INTUS Windows also contributes to the architectural and construction industry education. Our employees hold Lunch & Learn type training on 5 accredited topics in a variety of U.S. regions. Over 200 such trainings are performed yearly.



## MISSION

### Why

We care about giving back to the environment, planet and communities!

### How

For every window and door we sell, we plant a tree.

Our products help increase occupant comfort, create healthier environments, reduce energy usage and CO<sub>2</sub> emissions.

We go above and beyond to make the client's project successful.

### What

We happen to make high-performing, long-lasting, energy efficient windows and doors!



## GREEN BUILDING

Create a flood of daylight while achieving one of the highest thermal performances on the market, and balance costs too!

- Passive House Verified windows
- Gain up to 44 LEED points
- Recycled polymer profiles
- Suitable for any climate zone in the U.S.
- Low to high-rise options with AW & CW rated products

Green building is no longer the trend but the ethical and smart way to build. Through high performing windows and doors, you can secure savings on the ever-rising cost of energy, decrease your maintenance costs, and gain energy tax credits and/or funding.



## SUPERA PROFILE

### Better Performance, Same Competitive Price

- Increased thermal performance
- AW & CW class ratings available
- Passive House performance
- Highest industry standards for water and air penetration
- DP 70 structural ratings
- Industry-leading warranty



## SUPERA 83 PASSIVE

### Passive House Performance

INTUS achieves Passive House Institute (PHI) Certification through our thermally efficient Supera 83 Passive profile and high-performance triple glazing. By using this method versus expensive super insulated profiles, INTUS is able to affordably achieve PHI Certification for any climate zone in the U.S. and areas of Canada. With its steel reinforced profile, Supera 83 Passive is stronger structurally and can achieve certification at greater heights.



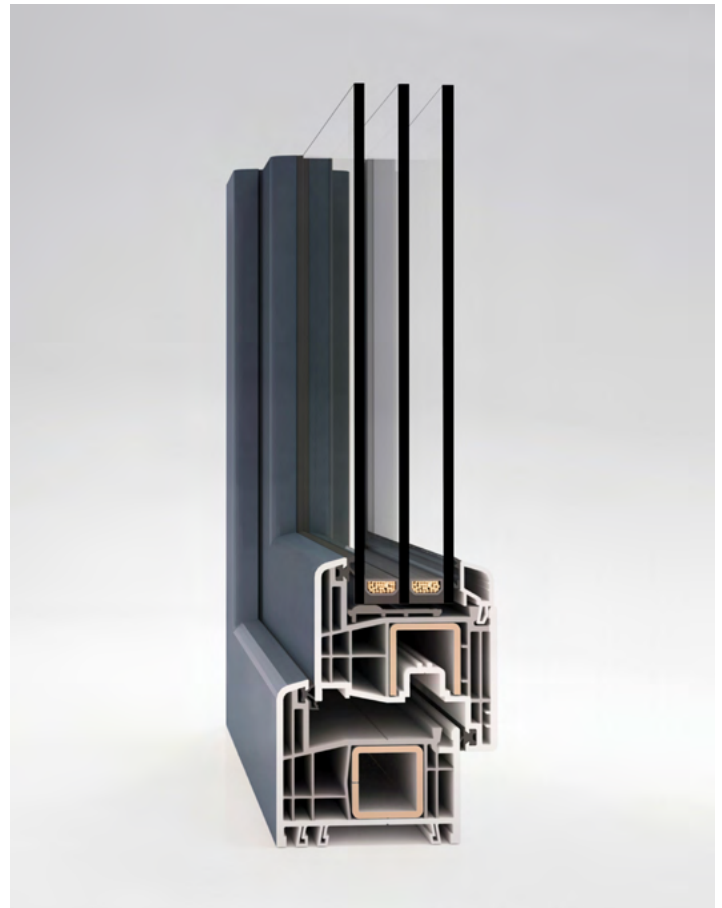
## SOUND ABATEMENT

Fenestrations are essential components for buildings that will be subjected to chronic noise exposure, as exposure can lead to:

- Higher blood pressure
- Higher school failure rates
- Disturbed sleep
- Reduced social performance

### SUPERA OPERABLE WINDOW

- Sound insulation up to OITC 38/STC 45\*
- U-factors as low as  $U=0.17$
- AW & CW rated assemblies
- Recycled Profile



\*All products are tested according to ASTM E90 testing by Intertek.

**intertek**

Total Quality. Assured.

## HOTEL PARTNERSHIPS

INTUS has become a **Supplier's Connection Partner with Hilton** and an **Approved Network Select Vendor for Marriott's C-suite brands**.

With these partnerships, INTUS' products will help provide better sleep through reduced noise, more comfortable rooms with improved thermal insulation, and more affordable rooms through secured energy savings. Our environmentally responsible products will also give back to hotels' regions through our One Window, One Tree program.





## ONE WINDOW, ONE TREE

### One Window/Door = One Tree Planted

For every window or door purchased, we plant a tree to further offset a structure's carbon footprint. One Window, One Tree. INTUS conserves energy and decreases carbon through our super energy efficient windows and doors, while proactively increasing our planet's carbon absorption.

INTUS and our partners collaborate to plant trees in the region of our building projects. The planting site is based on several factors, including the most beneficial impact to the local environment. We've partnered with One Tree Planted, and local organizations and governments to target areas in need. We are transforming the buildings we live and work in, and the environment around them.



## RELIABLE PROVIDER CHECKLIST

- ✓ Fully Tested Products
- ✓ Highest Quality Components
- ✓ Knowledge Center
- ✓ On-site Drafting & Engineering
- ✓ Constant Testing
- ✓ Quality Assurance
- ✓ After-Sales Support
- ✓ Certified Installer Network
- ✓ Services & Installation
- ✓ Optimized Logistics
- ✓ Energy Efficient Fenestration Leader
- ✓ References



## FULLY TESTED PRODUCTS

- All INTUS products have been tested to North American Fenestration Standards (NAFS), and are compliant with American Architectural Manufacturers Association (AAMA) and American Society of Civil Engineers (ASCE) standards.
- Tested to National Fenestration Ratings Council (NFRC) guidelines.
- Sound transmission loss testing conducted under American Society for Testing Materials (ASTM) guidelines.
- Passive House (PHIUS & PHI) Verified and suitable for LEED projects.
- Our manufacturing facility's most recent inspection by the National Accreditation & Management Institute (NAMI) was on May 16th, 2016.
- Continuous job site tests of performance mock-ups.

Products tested by\*:



Products tested to the standards of\*:

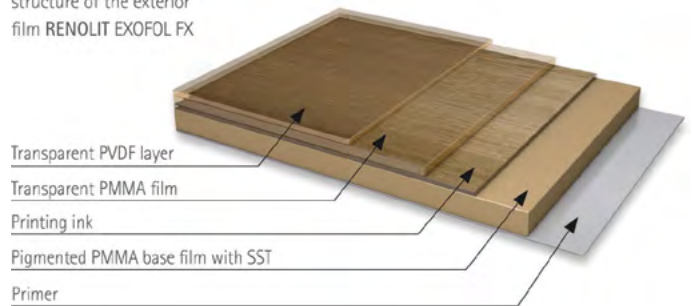


## HIGHEST QUALITY COMPONENTS

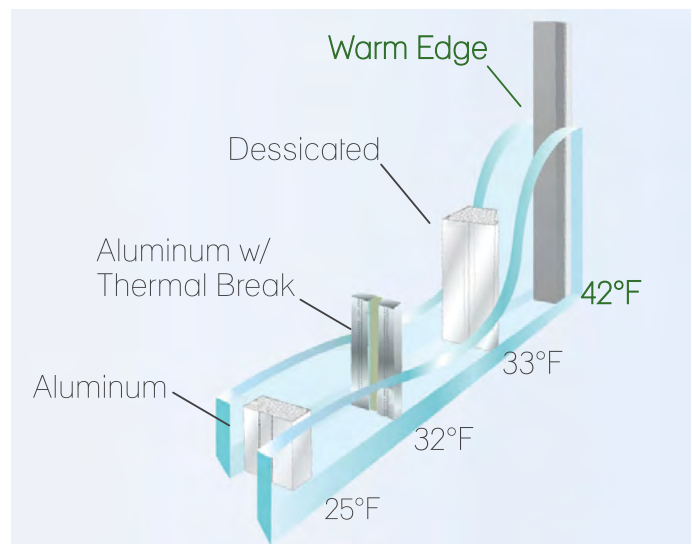


EXOFOL FX  
Laminates

Diagram showing the structure of the exterior film RENOLIT EXOFOL FX



**SWISSPACER**  
Warm Edge Spacers

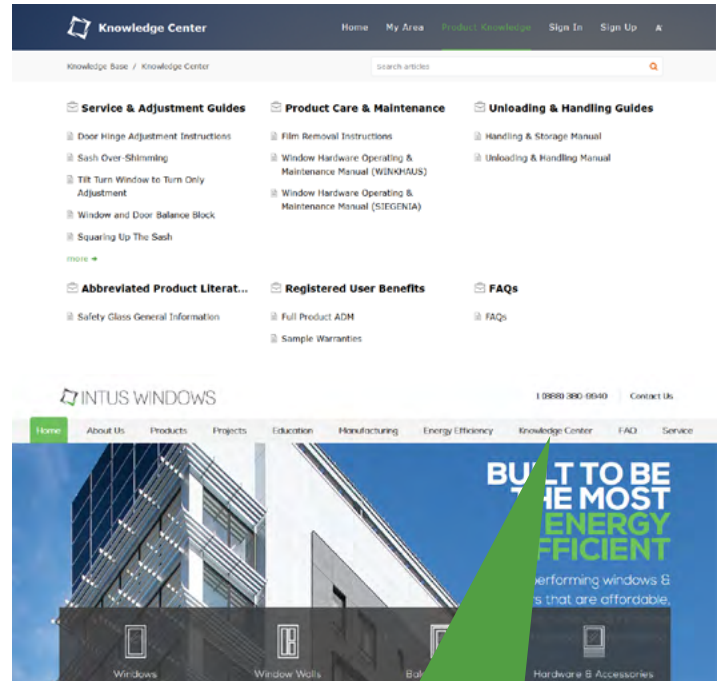


## KNOWLEDGE CENTER

The Knowledge Center is the new home for all the technical documents and resources that you need for your project, such as:

- CAD Library
- BIM Models
- Brochures
- Maintenance
- Warranties

And much more!

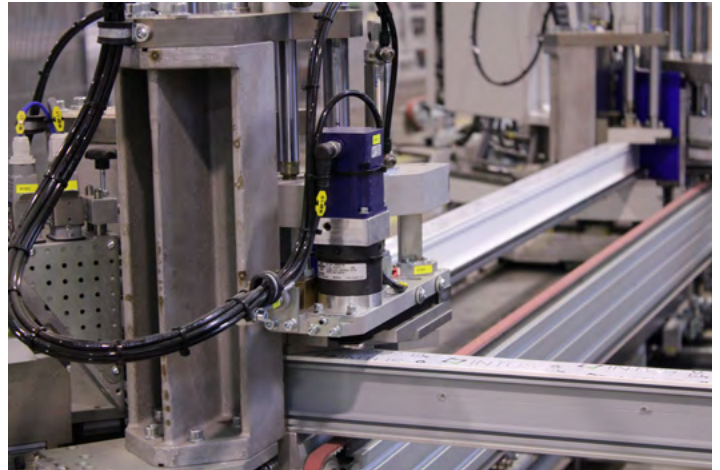




## CONSTANT TESTING

Every 75<sup>th</sup> window from production is randomly tested for water and air penetration. The required PSF level is taken from shop drawings and the pressure always goes 50% above just to be 100% sure.

Every single window that leaves production is personally checked by a staff member for physical quality. There is a general checklist that has to be completed, which is then compared with an electronic version.



EVERY  
75<sup>th</sup> ✓✓✓  
WINDOW  
TESTED

## QUALITY ASSURANCE

- **Materials:** All received materials are checked with our Acceptance Quality Limit (AQL) table and material checking requirements.
- **Physical Checks:** Every window/door leaving production is thoroughly checked by a production staff member. Every component must pass our detailed quality control checklist.
- **Constant Improvement:** Anyone in the production staff can suggest ideas for improvement which are displayed openly in the factory.





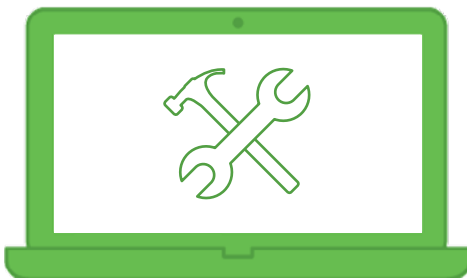
## AFTER-SALES SUPPORT

QR Codes added to every product for easy tracking.

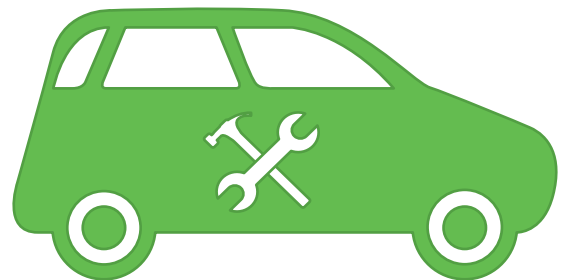


Full of valuable information which makes service, installation, and product identification a breeze.

## TECHNICIAN SUPPORT



Virtual Assistance



Field Assistance  
If Required

## CERTIFIED INSTALLER NETWORK

Through our network of INTUS Certified Installers, bids from highly rated and experienced installers are at hand. Benefits to working with our certified network include:

- **Quicker Installation:** Install without receptor, on-site tutorial from INTUS Technicians and video calling for troubleshooting, complimentary starter Installation Kit
- **Highly Experienced Technical & Internal Support:** Thermal Analyst, Passive House & LEED Certified Consultants, Optimized Logistics, Claim Management, Technicians, and a Certified Installer Program
- **Materials:** Shipping allowances, extra materials (handles, weep covers, etc.), INTUS marketing materials
- **Free Services:** Take-off and quoting process, quote modifications, shop drawings, service from INTUS technician



## SERVICES & INSTALLATION

- Design stage consulting service
- Full library of service and product support documents
- Project scope meetings
- Free installer training and assistance on any job
- Video call troubleshooting with INTUS installers
- Complimentary Installation Kit



## OPTIMIZED LOGISTICS



1  
Pallets are packed and loaded in an optimized manner to save storage space.



2  
Different profiles, frames, glass units, dimensions and composition products can be combined under request.



3  
Pallets are delivered and optimized according to agreed upon priority list and specific customer needs.

## DELIVERY ON TIME GUARANTEE



Delivery on time or you receive \$1,000!\*

*\*\$1,000 will be credited if delivery of your first full container falls outside of the planned delivery window provided by our Logistics department.*

# ENERGY EFFICIENT FENESTRATION LEADER

- Passive House Verified windows (PHIUS)
- Largest passive certified PHIUS senior living development in N. America
- 1<sup>st</sup> charter school in the U.S. to use triple pane windows
- 1<sup>st</sup> passive school in Maine
- 1<sup>st</sup> large scale multi-family passive house in Maine
- **Seventh-day Adventists Church:** PHIUS 2017 Commercial Winner
- **Village Centre Apartments:** PHIUS 2016 Multifamily Winner, PHIUS 2016 Affordable Winner
- **Chesapeake Bay Foundation:** Brock Environmental Center: 2018 USGBC VA Exceptional Leadership Award
- **Prospect Plaza:** 1<sup>st</sup> Active Design Verified Multi-family Affordable Housing Development, National Association of Home Builders (NAHB) Best in Green Multifamily Project - Affordable





# REFERENCE PROJECTS



## THE HAMILTON APARTMENTS (PHASE 1)

Location: Philadelphia, PA

Architect: MY Architecture

GC: Clemens Construction

Project Type: Multi-family residential

Size: 504,000 SF, 10 stories, 290 residential units



# CAPITAL CITY PUBLIC CHARTER SCHOOL

- » Sound: STC 40/OITC 35
- » LEED Gold Certified
- » 1<sup>st</sup> charter school in the U.S. with energy efficient triple pane windows

Location: Washington, DC

Architect: Shinberg.Levinas Architects

GC: MCN Build

Project Type: Institutional

Size: 167,000 SF, 3 stories







## 1875 ATLANTIC AVENUE

» **Sound: STC 45/OITC 38**

Location: Brooklyn, NY

Architect: Studios C Architect & Design

Developer: Velocity Framers USA, Inc.

GC: Sigal Construction

Project Type: Multi-family residential

Size: 78,000 SF, 9 stories, 118 residential units



## MOXY HOTEL DC

- » **Sound: STC 45/OITC 38**
- » **LEED Silver Certified**
- » **2019 Gold Key Awards Finalist**

Location: Washington, DC

Architect: Fillat+ Architecture

Developer: Douglas Development

GC: CBG Building Company

Project Type: Hospitality

Size: 74,000 SF, 13 stories, 200 guest rooms





## HILLCREST SENIOR RESIDENCES



- » **PHIUS Certified**
- » **Largest PHIUS Certified senior living development in N. America**

Location: Pittsburgh, PA

Architect: RDL Architects

GC: SOTA Construction

Project Type: Senior living residential

Size: 67,000 SF, 4 stories, 66 residential units



## ASTORIA CENTRAL APARTMENTS

» **Sound: STC 45/OITC 38**

Location: Astoria, NY

Architect: SLCE Architects

GC: Mega Contracting Group

Project Type: Multi-family residential

Size: 142,000 SF, 20,000 SF retail, 3,500 SF community facilities,  
7 stories, 114 residential units



## ELYSIUM FOURTEEN

» **LEED Certified**

Location: Washington, DC

Architect: PGN Architects

Developer: Madison Investments

GC: Hoar Construction

Project Type: Multi-family residential/Mixed-use

Size: 69,000 SF, 9 stories, 56 residential units





## HANAC CORONA



- » **PHI Certified**
- » **Multi-family Performance Standards for Energy Star Certification**
- » **Enterprise Green Communities Criteria**
- » **Finalist in the Affordable Housing Finance 2019 Readers' Choice Awards**

Location: Corona, NY

Architect: think! Architecture & Design, PLLC

GC: Bruno Frustaci Contracting, Inc.

Project Type: Senior living residential

Size: 57,675 SF, 5,000 SF early childhood education facility, 8 stories, 68 affordable housing units for low-income seniors



## PROSPECT PLAZA (PHASE 1 & 2)

- » **LEED Platinum Certified**
- » **Project participating in NYSERDA Multi-Family Version 5 Performance for New Construction program**
- » **LEED for Homes Multi-Family Midrise V2010, & NGBS Certification (National Green Building Standard)**

Location: Brooklyn, NY

Architect: Dattner Architects

GC: MEGA Contracting Group

Project Type: Multi-family residential

Size: 4 stories, 32 residential units (Building 1A); 6 stories, 78 residential units (Building 1B)





## WYNNE SENIOR RESIDENCES

» **PHIUS Certified**

Location: Philadelphia, PA

Architect: Kitchen & Associates

GC: Domus, Inc.

Project Type: Senior living residential

Size: 60,700 SF, 4 stories, 51 residential units







## 900 KIPLING HOUSE

» **Sound: Fixed: STC 31/OITC 25, Operable: STC 33/OITC 27**

Location: Washington, DC

Architect: PGN Architects

Developer: Madison Investments

Project Type: Multi-family residential

Size: 60,000 SF, 4 stories, 49 residential units



## THE EDWIN HOTEL

- » Chattanooga's 1<sup>st</sup> luxury boutique hotel
- » 2019 Gold Key Awards Finalist

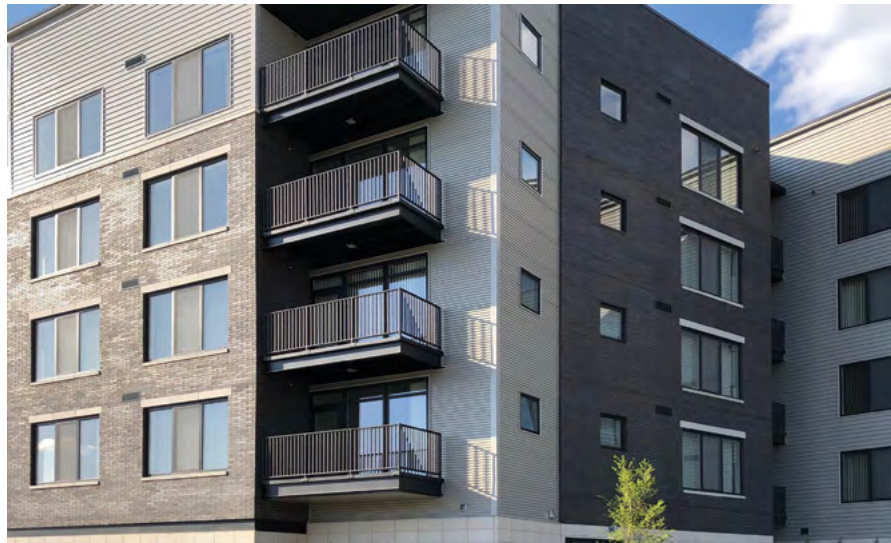
Location: Chattanooga, TN

Architect: Tinker Ma Architecture & Design

Developer: Vision Hospitality Group

Project Type: Hospitality

Size: 5 stories, 90 guest rooms



## 10/NORTH APARTMENTS

Location: Chattanooga, TN

Architect: PV Design, Inc.

Developer: Vision Hospitality Group

Project Type: Multi-family residential/Mixed-use

Size: 5 stories, 84 residential units plus mixed-use retail



TETRA,  
AUTOGRAPH  
COLLECTION & AC  
HOTEL SILICON  
VALLEY

Location: Sunnyvale, CA

Architect: DLR Group

Developer: T2 Hospitality

GC: Stoer Construction

Project Type: Hospitality

Size: 200,000 SF, 3.03 acre site, 8 stories (both hotels), 350 guest rooms across 2 hotels



## WOOD WORKS APARTMENTS

» **Sound: Fixed: STC 31/OITC 26, Operable (Dual Action):  
STC 32/OITC 25**

Location: Harrison, NY

Architect: Papp Architects, PC

Developer: 550 Halstead Avenue, LLC

GC: Lighthouse Enterprises, LLC

Project Type: Multi-family residential

Size: 33,000 SF, 5 stories, 36 residential units



## PARK AVENUE GREEN (PHASE 2)

- » **PHIUS Certified**
- » **LEED Silver Certified**
- » **Largest passive house development in N. America**
- » **1<sup>st</sup> large, affordable passive house development in the Bronx**

Location: Bronx, NY

Architect: Curtis + Ginsberg Architects, LLP

Developer: Omni New York, LLC

GC: Monadnock Construction

Project Type: Multi-family residential/Mixed-use

Size: 175,000 SF residential, 9,500 SF retail, 8,500 SF child care center,  
15 stories, 154 residential units





## AVALON BAY TOWSON CIRCLE (BUILDING A)

- » **Sound: STC 35**
- » **Multi-family Green Building Certified**

Location: Towson, MD

Architect: KTG Architects

GC: AvalonBay Communities

Project Type: Multi-family residential/Mixed-use

Size: 240,000 SF street-level commercial space, 14 stories,  
371 residential units



## ELYSIUM LOGAN

» **LEED Certified**

Location: Washington, DC

Architect: PGN Architects

Developer: Madison Investments

GC: Sigal Construction Corporation

Project Type: Multi-family residential

Size: 59,000 SF, 9 stories, 32 residential units







## ST. AUGUSTINE APARTMENTS



- » **LEED Gold Certified**
- » **Enterprise Green Communities**
- » **NYSERDA Multifamily Performance Program Completion**

Location: Bronx, NY

Architect: Magnusson Architecture & Planning PC

Developer: New York Institute for Human Development, Inc.

GC: Mega Contracting Group

Project Type: Multi-family residential

Size: 117,000 SF, 6–12 stories, 112 residential units



## WEBSTER GREEN APARTMENTS



» **LEED Certified**

Location: Bronx, NY

Architect: Magnusson Architecture & Planning PC

Developer: The Doe Fund

GC: Galaxy GC Group, LLC

Project Type: Multi-family residential

Size: 76,909 SF, 8 stories, 82 affordable/supportive housing units



## EMBLEM AT BARRACKS ROW

» **LEED Gold Certified**

Location: Washington, DC

Architect: Fillat+ Architects

Developer: Bozzuto Group

GC: Northfield Construction & Development

Project Type: Multi-family residential/Mixed-use

Size: 26,000 SF, 4 stories, 20 residential units



## FILLAT+

ARCHITECTURE

October 17, 2019

INTUS Windows  
2720 Prosperity Ave #400-1  
Fairfax, VA 22031

To Whom It May Concern,

We are writing to highly recommend INTUS Windows. We have worked with them on multiple successful projects: Moxy Hotel by Marriott and Emblem at Barracks Row. We experienced excellent customer service and found their products to be superior. The delivery was on time, the installation process went quickly, the finished product looks very sleek, and the end user is very pleased with their daylight filled spaces and the lack of maintenance.

Beyond the savings from significantly reduced energy costs, the buildings are eligible for tax credits since they are both LEED Certified. The windows supplied multiple LEED points and INTUS is planting a tree for every window installed. Excellent sound ratings was imperative in the selection process, as both structures are in very loud areas of Washington, D.C. (along a highway and on a busy cross street). INTUS helped us customize the windows so the lower levels that receive more noise had the highest sound ratings, with upper levels having their more standard sound reducing windows which helped keep costs down.

We look forward to using INTUS windows and doors on future projects and recommend others use their energy efficient products.

Sincerely,



Manish V. Patel, RA. LEED AP BD+C  
Associate Principal





March 26, 2018

Brian Guyer  
Business Development Executive  
INTUS Windows  
2720 Prosperity Ave, Suite 400-1  
Fairfax, VA 22031

**RE: INTUS Windows Reference for Hilton Supplier's Connection Application**

To Whom It May Concern,

Established in 1997, Vision Hospitality Group is recognized as a leader in hotel development and management and is currently in the midst of completing construction on its first boutique hotel. As part of the selection process for construction products, Vision strives to ensure that any vendor selected shares the same core values in bringing quality products to their hotels. After significant vetting and recommendation by the contractor, Vision chose window and door systems from INTUS Windows. This project was originally slated to be supplied by another window manufacturer but after reviewing the value proposition offered by INTUS, we made the choice to go with them.

INTUS manufactures high-performance, steel-reinforced polymer windows and door systems that provide outstanding thermal, structural and acoustical benefits. Vision would like to recommend that INTUS Windows be considered as an approved supplier for Hilton branded projects.

Sincerely,

A handwritten signature in blue ink, appearing to read "Hiten Patel".

Hiten Patel  
Sr. Vice President of Development & Construction  
Vision Hospitality Group, Inc.



## Hillandale Hospitality LLC

57 Randolph Road, Suite 200  
Silver Spring, MD 20904

April 5, 2018

Ref: Home 2 Suites Silver Spring  
1701 Elton Rd.  
Silver Spring, MD 20903

Dear Sir or Madam,

I understand that Hilton is evaluating Intus Windows for inclusion into their team of preferred vendors. Allow me to lend my commendation of their work on our Home2 Suites project in Silver Spring, Maryland.

As a builder of industry leading high performance building we evaluated many window manufacturers and have been pleased with our decision to partner with Intus for several reasons:

- A. The performance (thermal and acoustic) of Intus windows
- B. The timeliness of design, manufacturing, and deliveries
- C. The cost competitiveness to any commercial window, much less one of such a high level of performance.

I would welcome any questions at my contact information below.

Sincerely,



**Tim Kamas**  
**Project Manager**  
**301-337-9710**  
**tkamas@duffieinc.com**



# INTUS WINDOWS

BUILT TO BE THE MOST ENERGY EFFICIENT

---

See how INTUS windows and doors can be built around your project by visiting us at [INTUSwindows.com](http://INTUSwindows.com). Browse through our building projects, and learn more about our window and door solutions. Access CAD drawings, BIM models, architectural manuals, and more through our Knowledge Center. Find the best solution for your project by contacting your local INTUS office through our Contact Us page. Let us help you make your next project become energy efficient!

**[INTUSWINDOWS.COM](http://INTUSWINDOWS.COM)**